

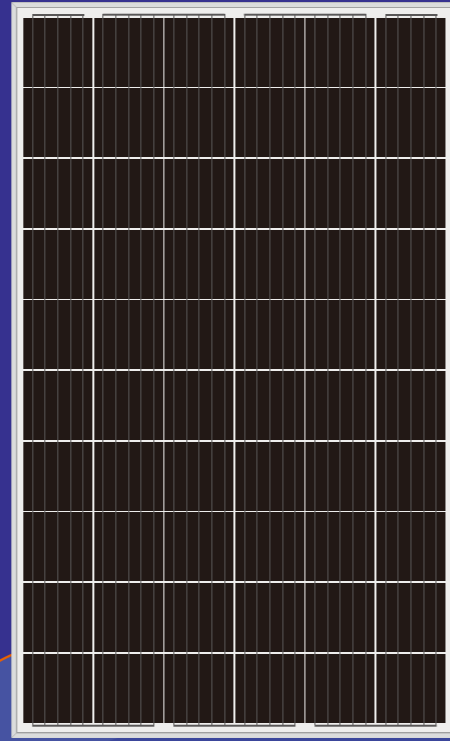
# Perc Mono PV Module

Mono



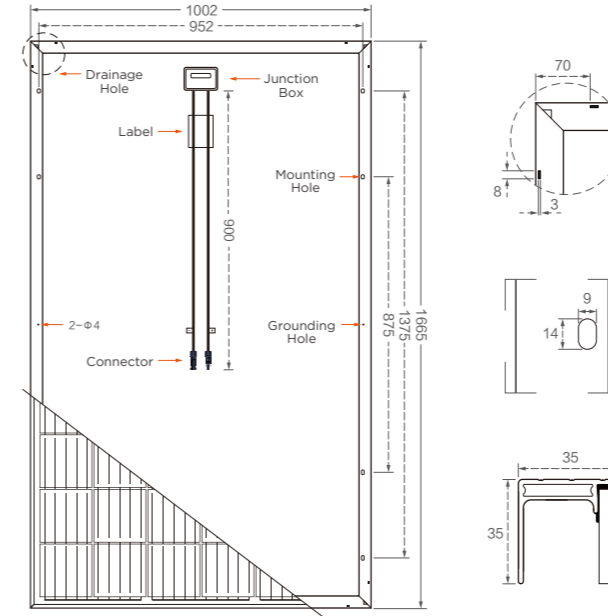
# 158.75mm

# DHM60X 310W-325W



# Perc Mono PV Module DHM60X 310W-325W

## Design



## Mechanical Specification

Cells Type	Mono 158.75x158.75mm
Weight	19kg
Dimension (LxWxT)	1665x1002x35mm
Output Cables	Length 900mm, 4.0mm <sup>2</sup>
No. of Cells	60(6x10)
Glass	3.2mm High Transmission, Antireflection Coating
Junction box	IP68, 3 Bypass Diodes
Connector	QC4 or MC4 compatible
Packing	30pcs/pallet, 400pcs/20GP, 910pcs/40HQ

## Operating Parameters

Maximum system voltage	1000V/1500V DC
Operating Temperature	-40 ~ +85°C
Maximum series fuse rating	16A
Snow load, frontside	5400Pa
Wind load, backside	2400Pa
Nominal operating cell temperature	45°C±2°C
Application level	Class A

## Electrical Characteristics(STC)

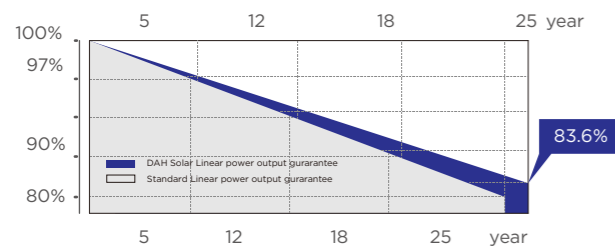
Module Type	DHM60X-310W-5BB	DHM60X-315W-5BB	DHM60X-320W-5BB	DHM60X-325W-5BB
Maximum Power (Pmax)	310W	315W	320W	325W
Open-circuit Voltage (Voc)	40.3V	40.5V	40.7V	40.9V
Maximum Power Voltage (Vmp)	33.0V	33.2V	33.4V	33.6V
Short-circuit Current (Isc)	9.89A	9.98A	10.07A	10.16A
Maximum Power Current (Imp)	9.40A	9.49A	9.59A	9.68A
Module Efficiency (%)	18.58%	18.88%	19.18%	19.48%
Power Tolerance	0~+5W			
Temperature Coefficient of Isc	0.048%/°C			
Temperature Coefficient of Voc	-0.28%/°C			
Temperature Coefficient of Pmax	-0.37%/°C			
Standard Test Environment	Irradiance 1000w/m <sup>2</sup> , Cell temperature 25°C, Spectrum AM1.5			

## Electrical Characteristics(NOCT)

Module Type	DHM60X-310W-5BB	DHM60X-315W-5BB	DHM60X-320W-5BB	DHM60X-325W-5BB
Maximum Power (Pmax)	231W	235W	239W	242W
Open-circuit Voltage (Voc)	37.4V	37.6V	37.8V	38.0V
Maximum Power Voltage (Vmp)	31.0V	31.2V	31.4V	31.6V
Short-circuit Current (Isc)	8.20A	8.33A	8.44A	8.54A
Maximum Power Current (Imp)	7.49A	7.56A	7.62A	7.66A
Standard Test Environment	Irradiance 800w/m <sup>2</sup> , Cell temperature 20°C, Spectrum AM1.5, Wind speed 1m/s			

## QUALITY GUARANTEE

### LINEAR POWER OUTPUT GUARANTEE



**10 years** 10-year material & technology warranty

**25 years** 25-year linear power output warranty

**0~+5W**

Positive Tolerance

**19.48%**

Max Module Eff.(%)

## PRODUCT PERFORMANCE ADVANTAGE

- Select Grade A crystalline silicon solar cells, high-power output with cost-effective
- Preferred packaging materials and strict process technology, excellent PID free performance
- Certified by dust-sand,salt-mist, ammonia etc. weather resistance tests, strong environmental adaptability
- Larger size of light receiving area, higher solar panel power, lower system cost

**DAH solar**

Top Runner of Smart PV Module

**Factory Address:** No.358 Tianhe Road, Luyang Industrial Park, Hefei City, Anhui, China  
**Office Address:** Floor 1-3, 6#A, Gongtuo Xinglu Industrial Park, Hefei City, Anhui, China  
**Email:** dhsolar@dh-solar.cn **Tel:** +86-551-65176633

**DAH solar**

Top Runner of Smart PV Module

**Factory Address:** No.358 Tianhe Road, Luyang Industrial Park, Hefei City, Anhui, China  
**Office Address:** Floor 1-3, 6#A, Gongtuo Xinglu Industrial Park, Hefei City, Anhui, China  
**Email:** dhsolar@dh-solar.cn **Tel:** +86-551-65176633